

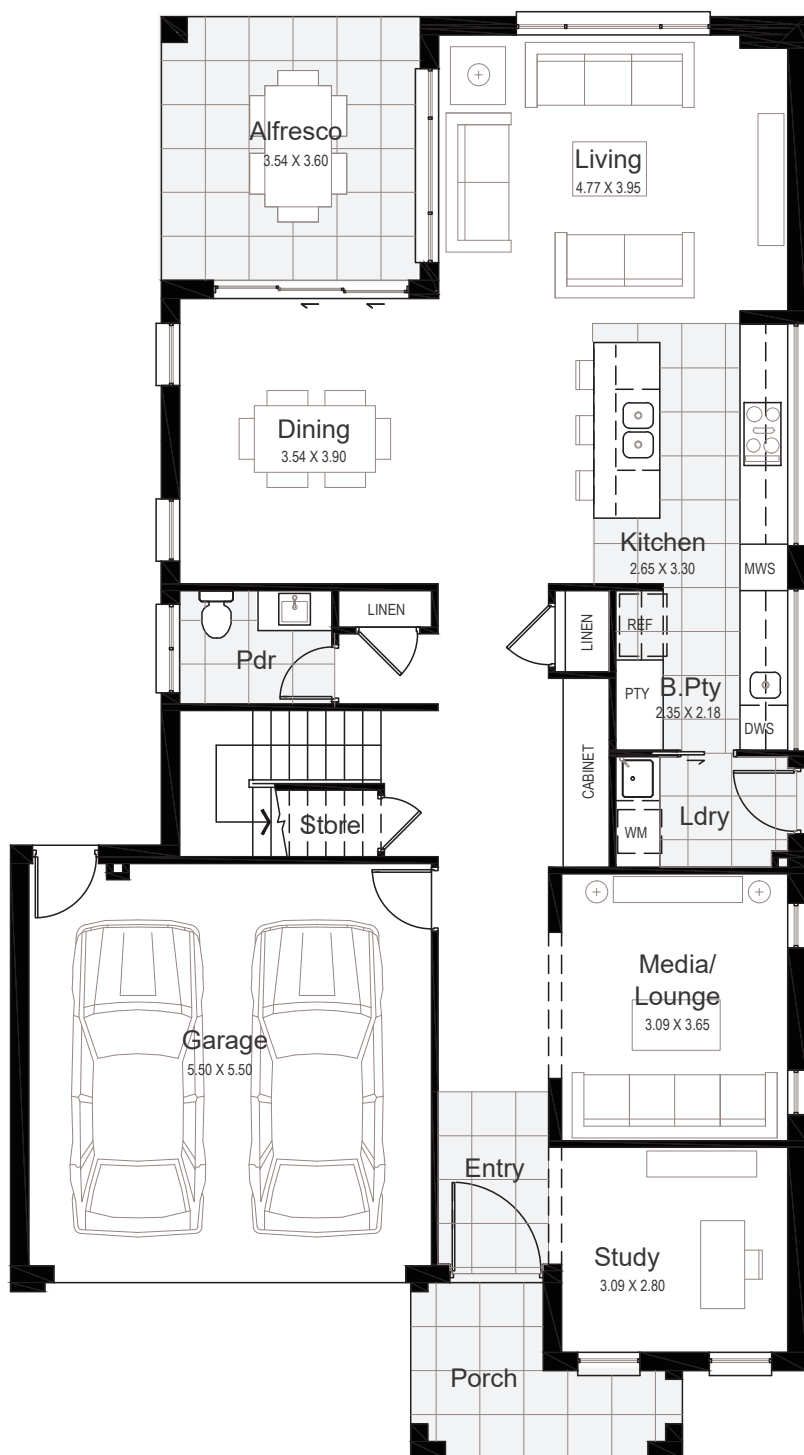
# BURTON 30 VOGUE

Min. Lot Width 12m

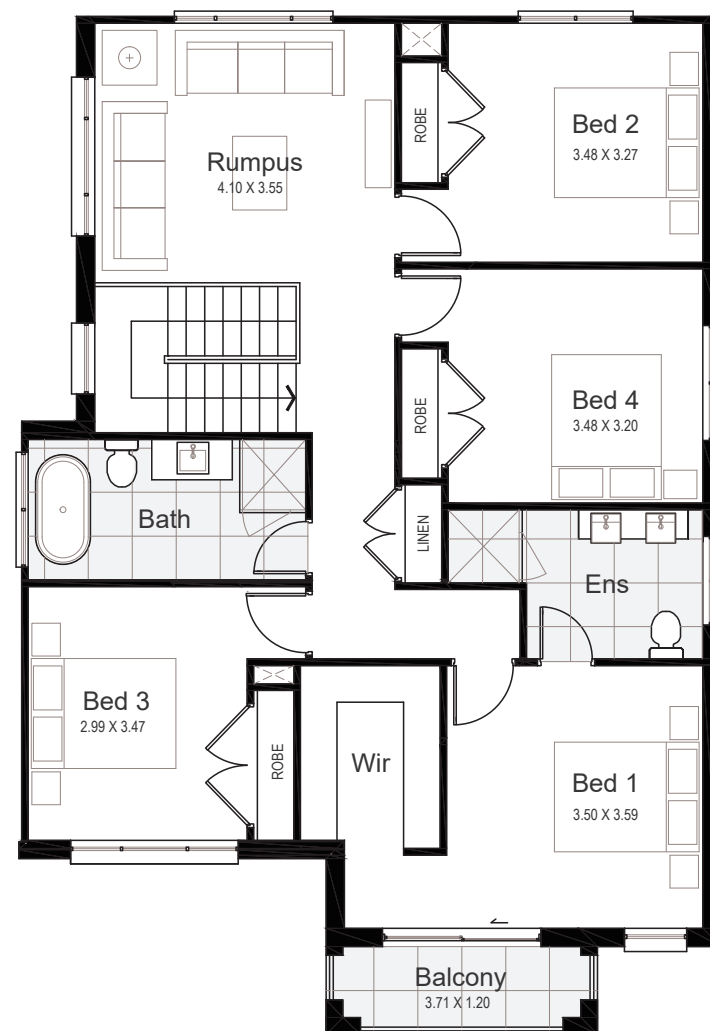


## HOUSE AREA

Ground Floor	122.83 m <sup>2</sup>
First Floor	112.37 m <sup>2</sup>
Garage	33.52 m <sup>2</sup>
Porch	6.62 m <sup>2</sup>
Alfresco	12.74 m <sup>2</sup>
Balcony	4.45 m <sup>2</sup>
<b>Gross Floor Area</b>	<b>292.53 m<sup>2</sup></b>



Ground Floor



First Floor

Built by **star** homes

© \*All drawings and photography are for illustrative purposes and should be used as a guide only. Star Homes reserve the right to withdraw packages, revise plans, specifications and pricing without notice or obligation. Copyright of plans and documentation used by Star Homes shall remain the exclusive property of the producing or authorised entity unless a license is issued otherwise. This house and land package is inclusive of GST. Star Homes have made all reasonable efforts to ensure the accuracy of this package flyer. It is recommended that the purchaser make their own enquiries in relation to this product offering and review their tender documentation with due care. Information and pricing are correct as at 14 October 2022. Changes can be accommodated to the package as requested by the purchaser subject to permissibility, however any changes as directed by the purchaser will be at their own cost. Star Homes ABN 35 602 963 502. Builder's Licence 290700C.